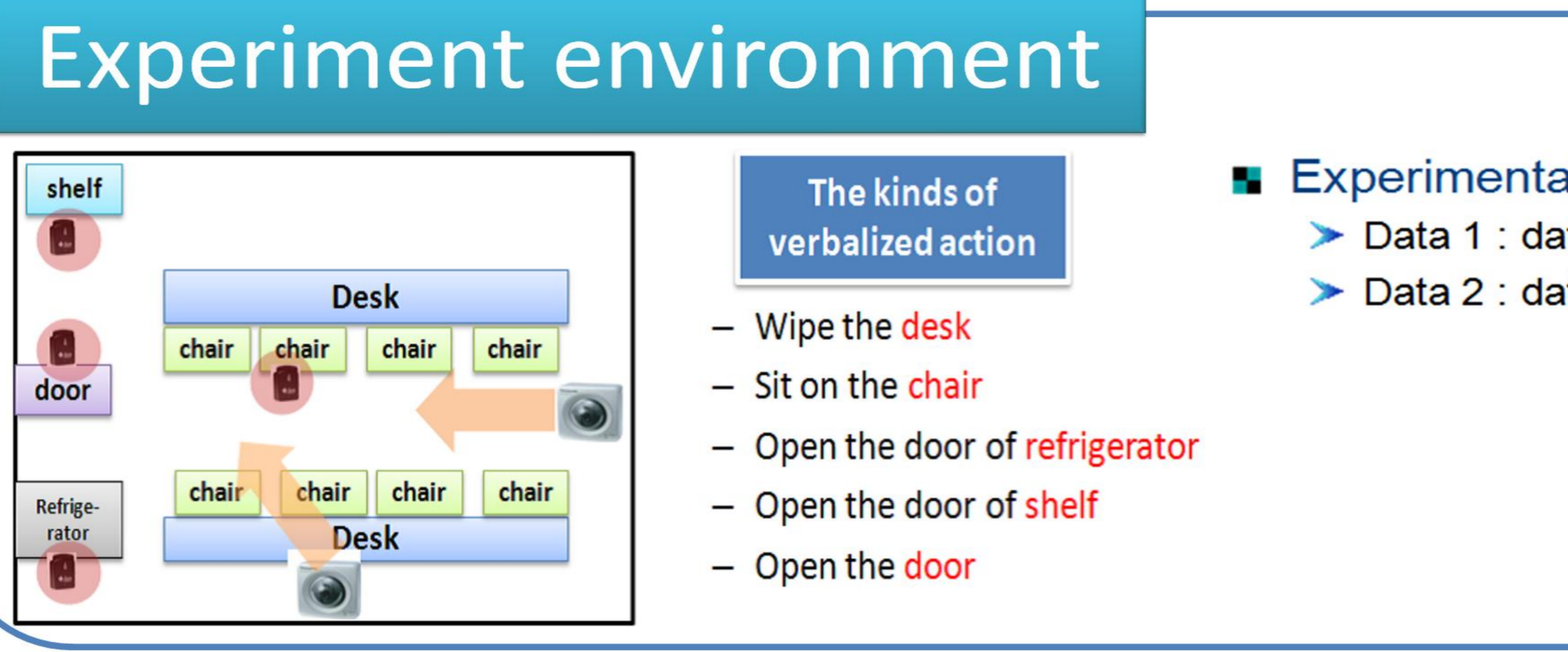
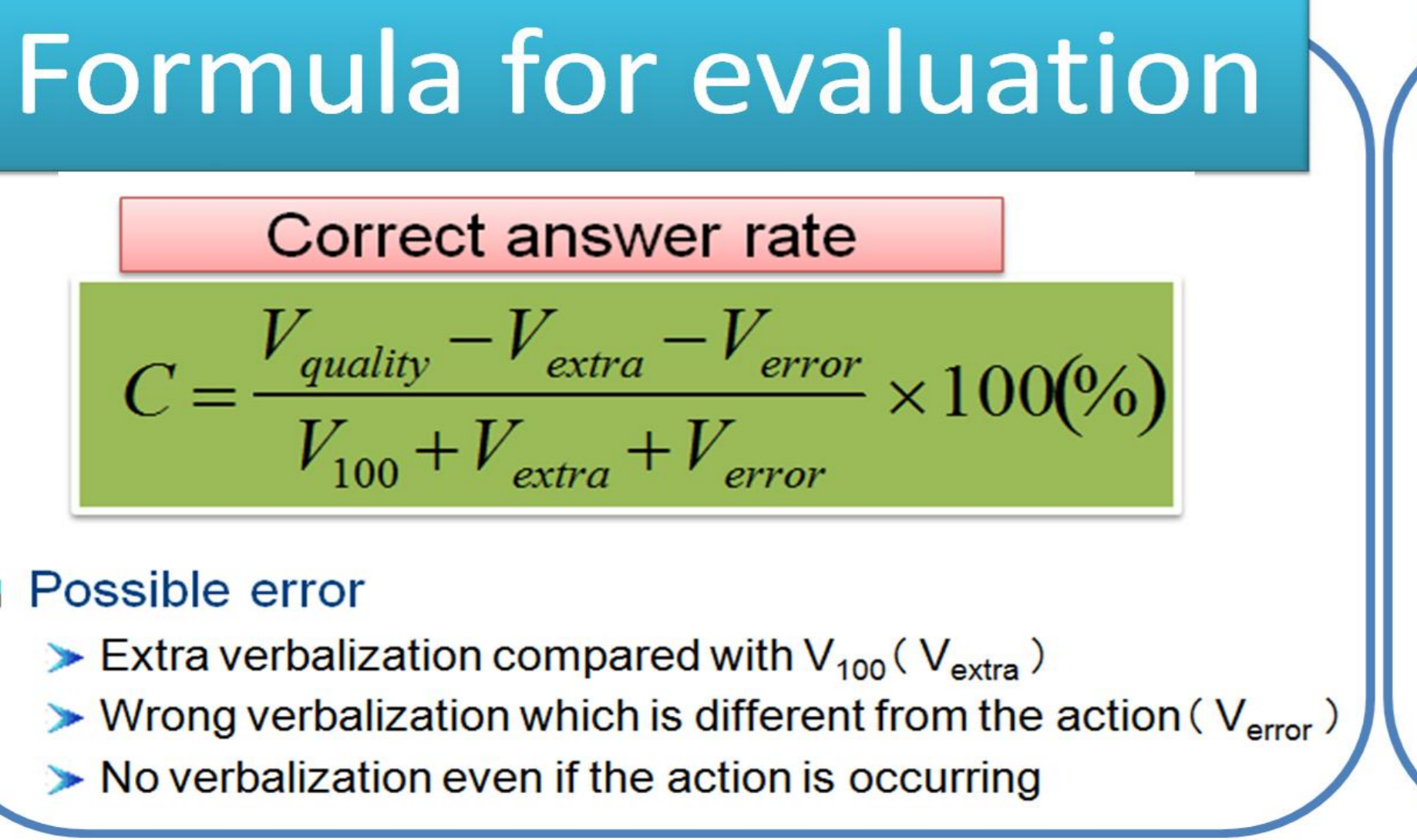
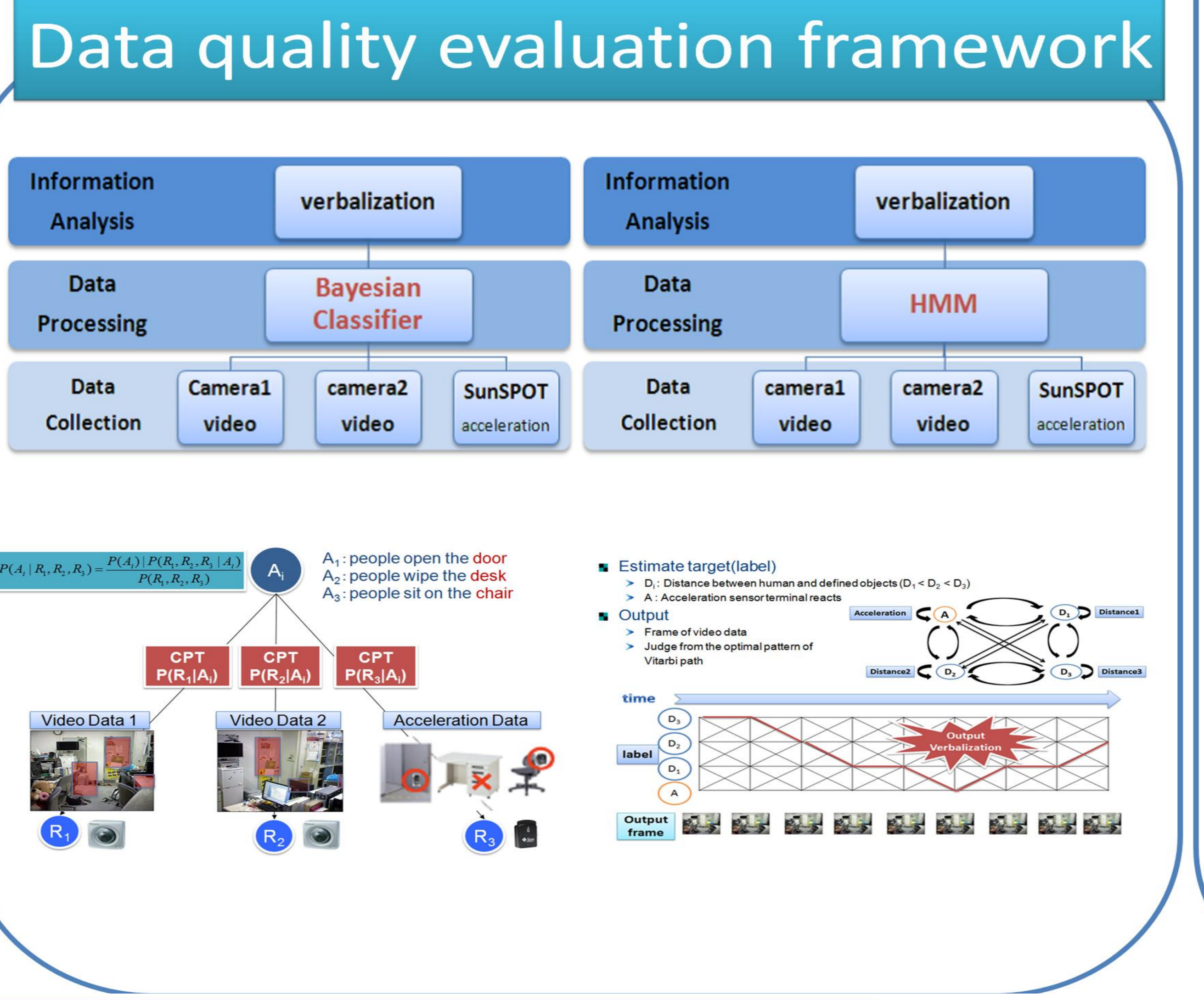
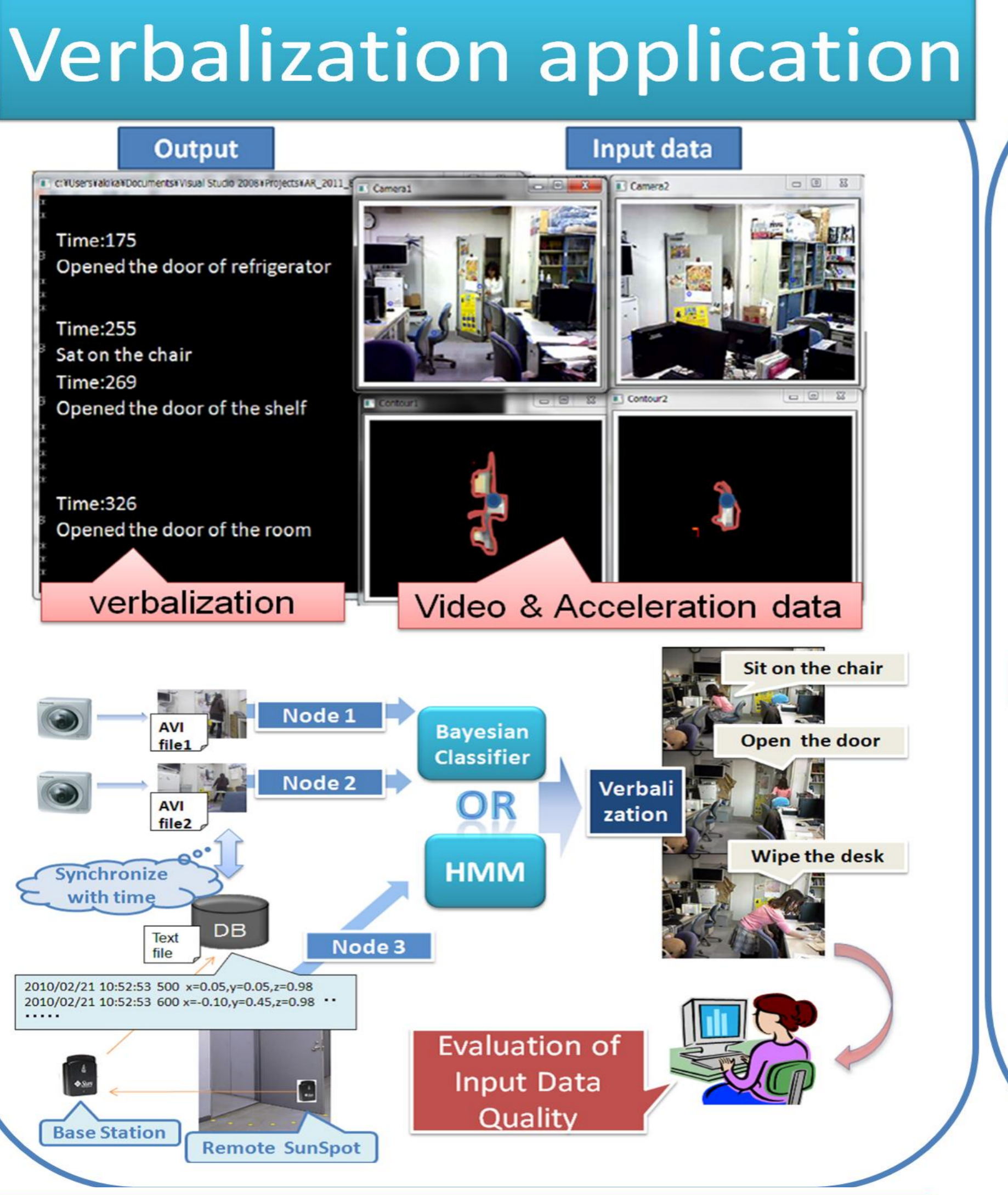
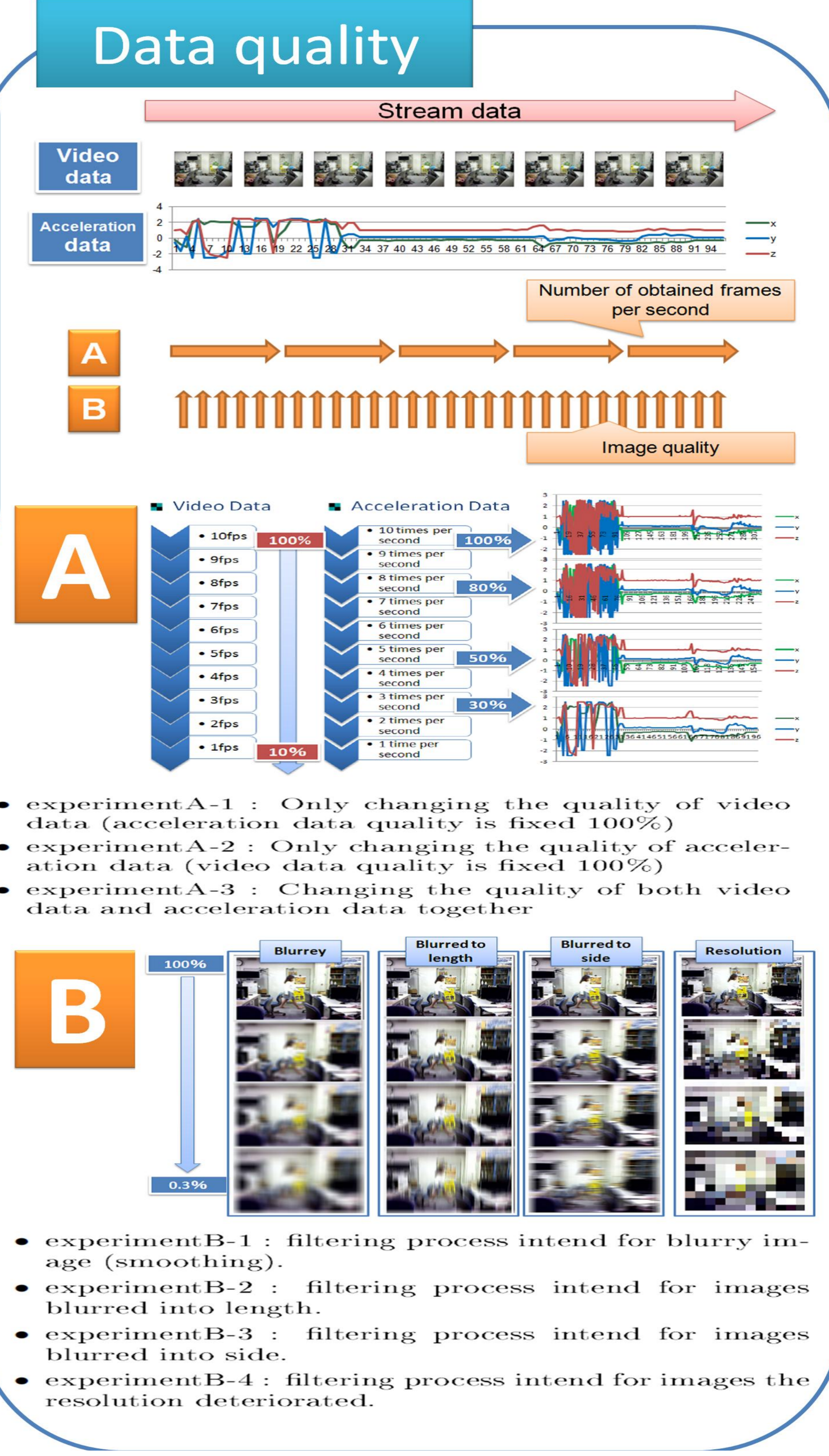
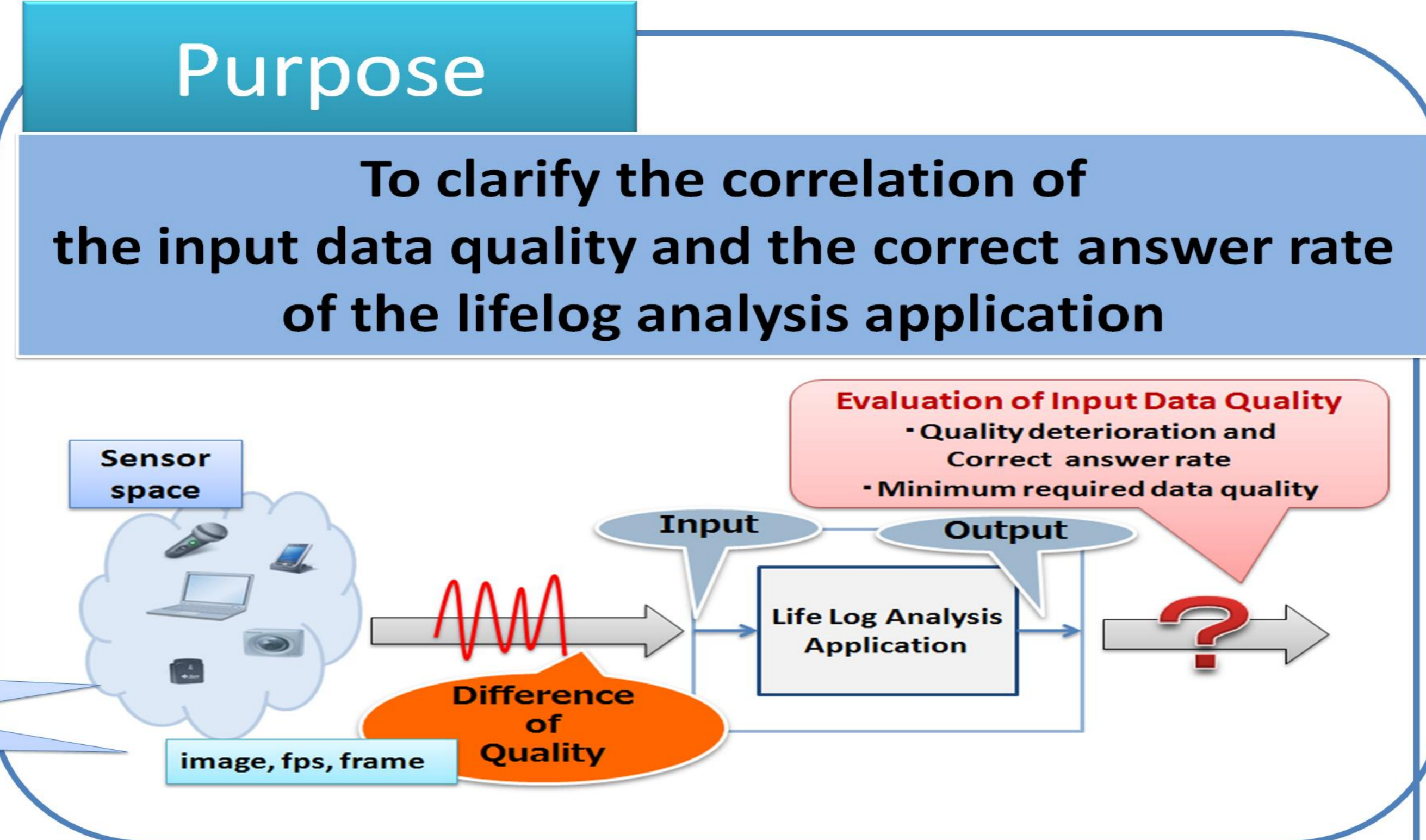
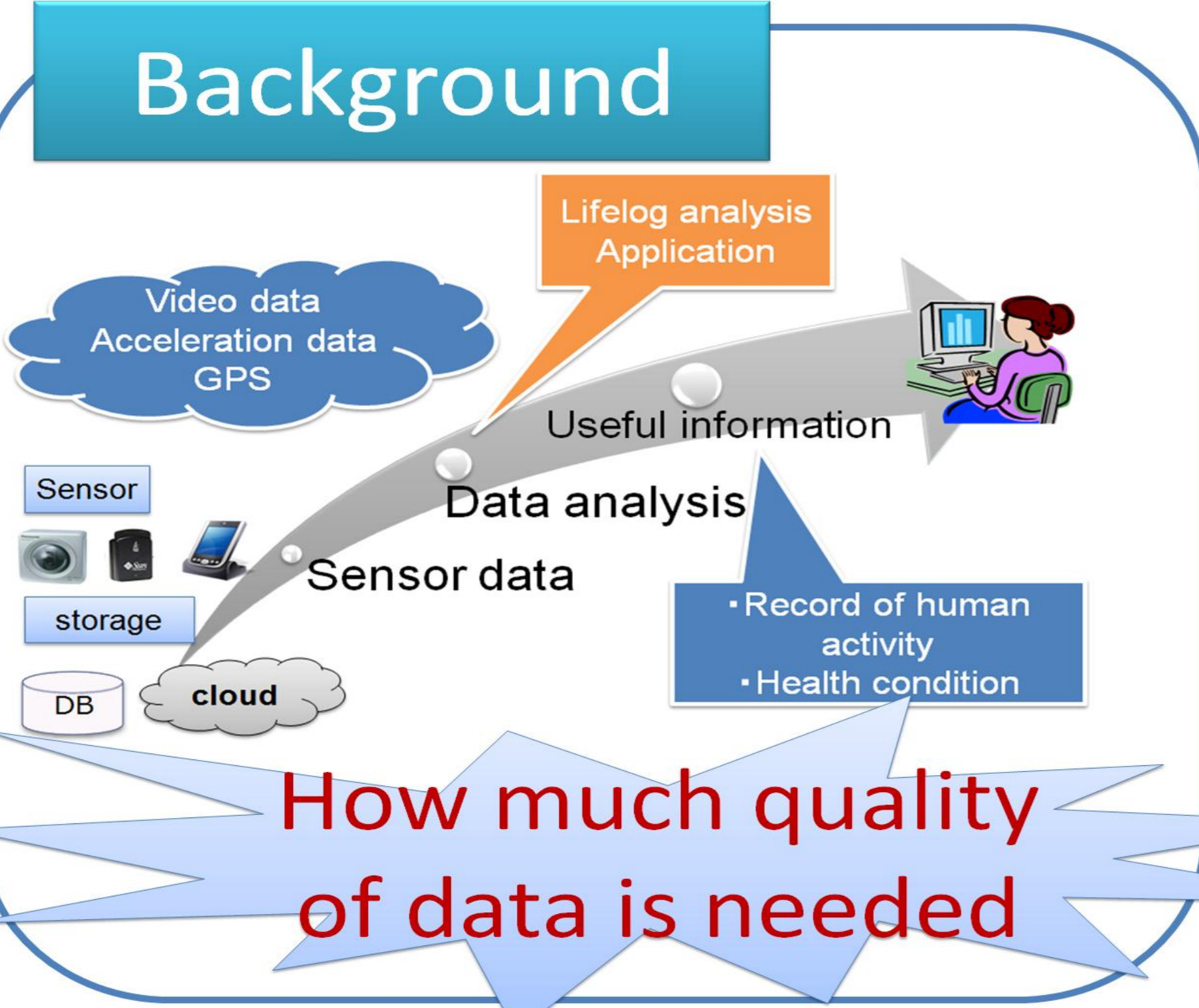
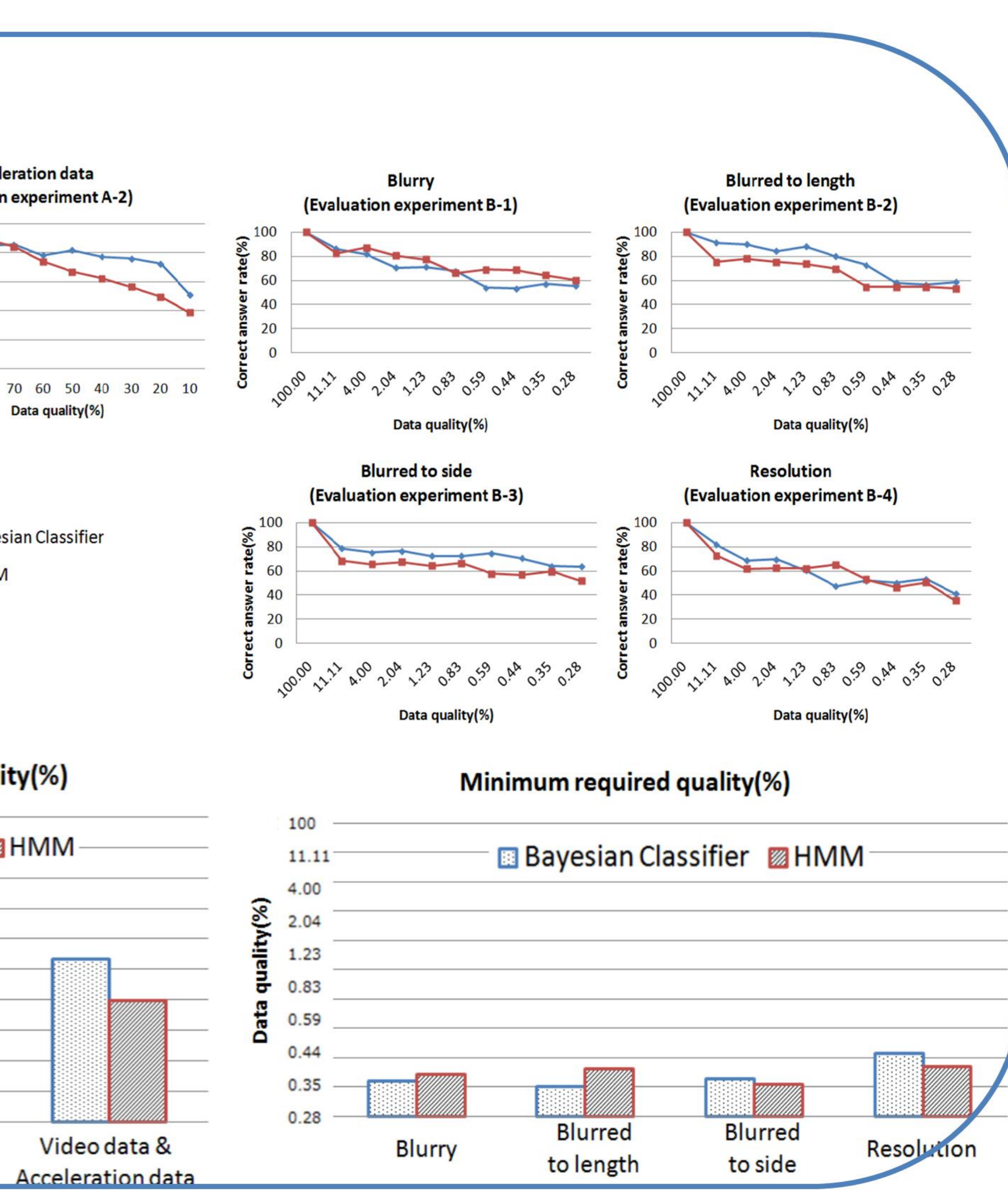
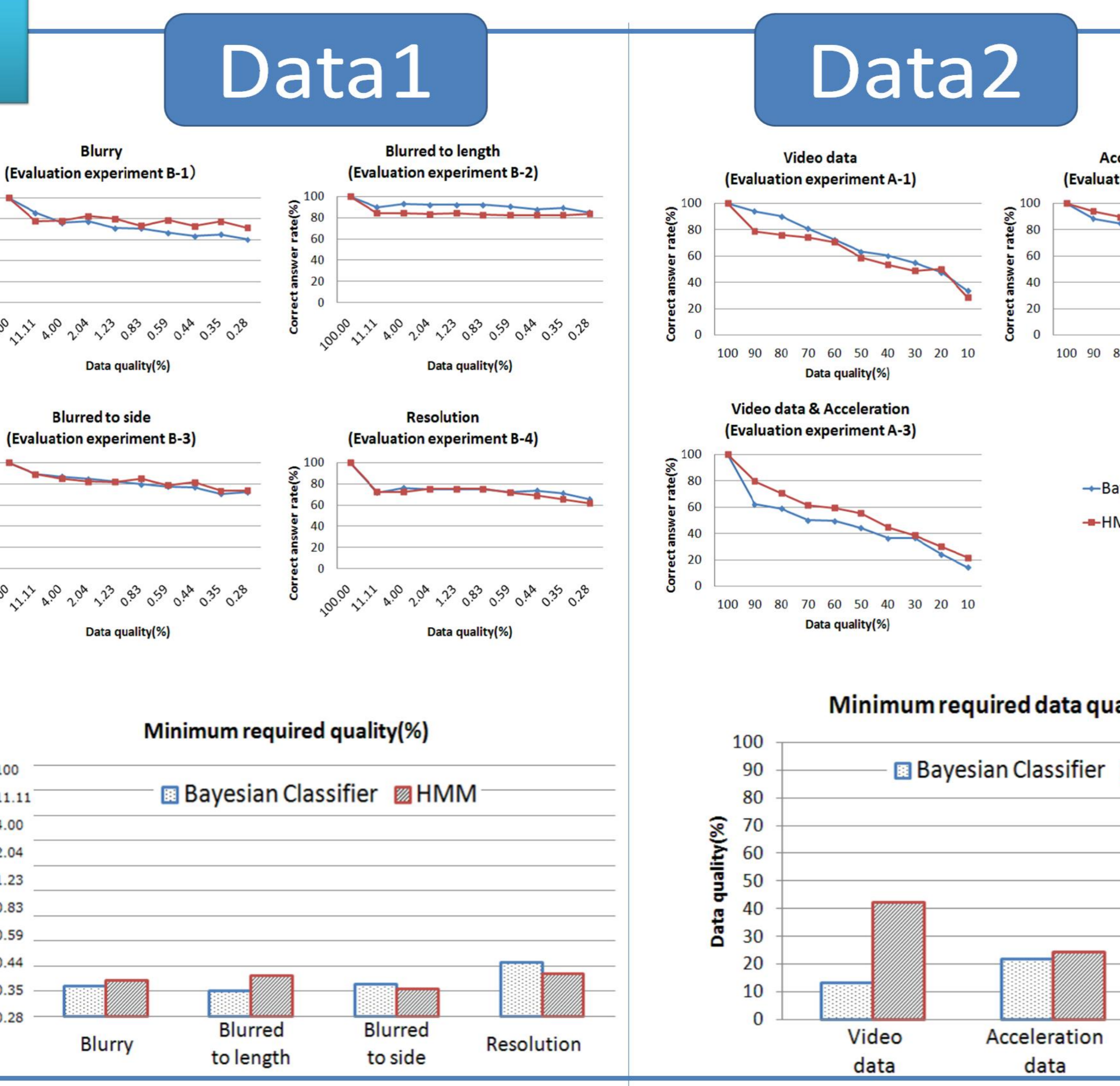
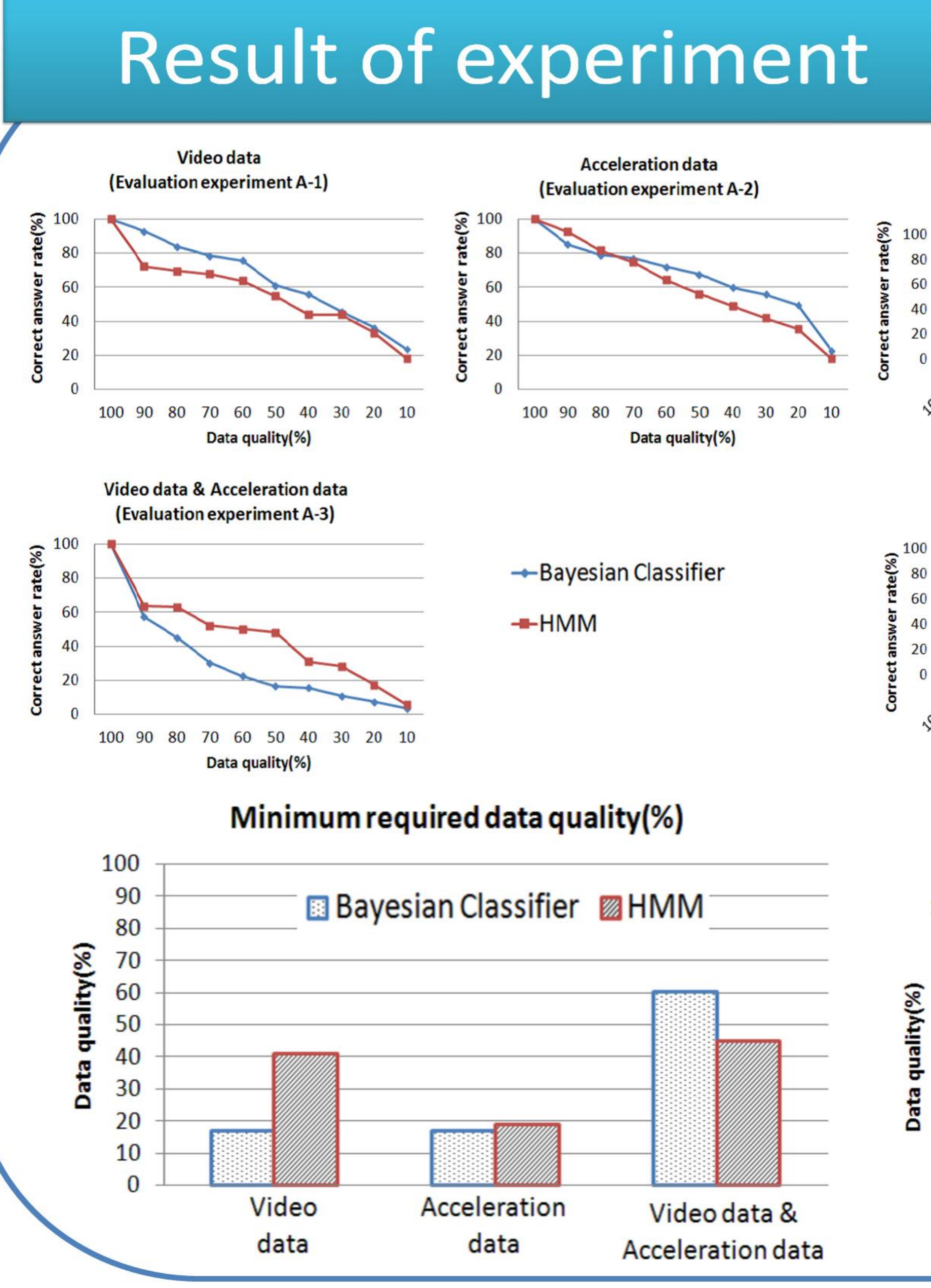


An Evaluation of Input Data Quality of Lifelog Analysis Application with a Framework based on Quantitative Index

Akika Yamashita[†] Saeko Iwaki[†] Masato Oguchi[†] [†] Ochanomizu University in Tokyo



- ### Experimental data
- Data 1 : data of people who are arbitrary acting five kinds of action in order.
 - Data 2 : data of people who are acting 5 kinds of action naturally.



Conclusion

- We showed the correlation between input data quality and the correct answer rate of "Verbalization application".
- The verbalization does not necessarily require 100% data quality to output correct answer.
- Data quality A has more influence on verbalization application than data quality B.

Future work

- Set sensor terminals at OchaHouse to collect "real data".
- Do evaluation experiments with "real data".
- Deal with "communication quality" of input data.